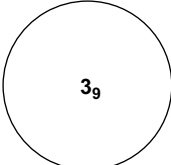


**INSTRUMENT APPROACH CHART - ICAO**

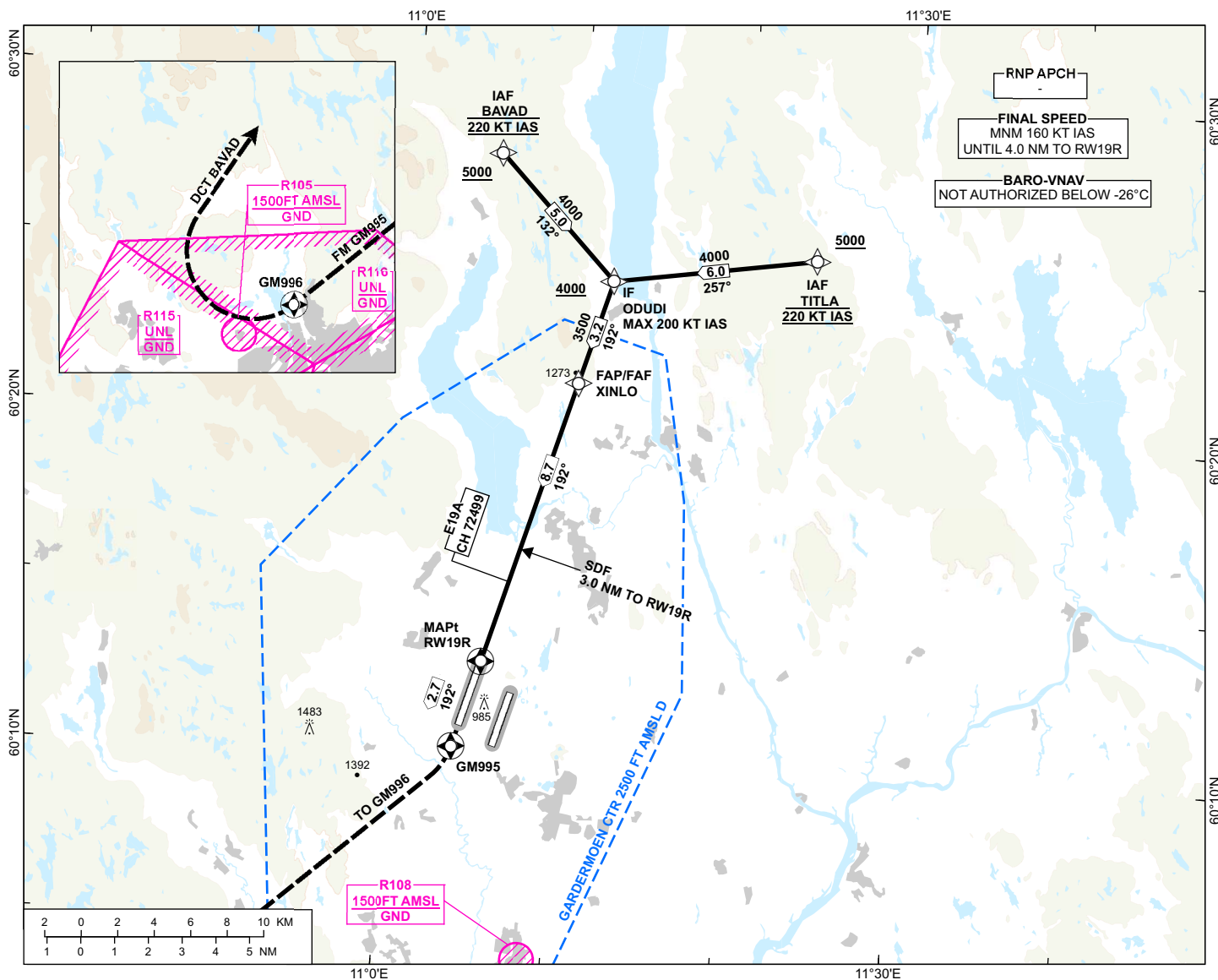
 <p>MSA 25 NM ARP</p>	ATIS: 126.130	AD ELEV: 682
	APP: 118.480 120.455	THR ELEV: 676
	DIR: 136.405 119.980	HGT RELATED TO THR 19R
	FIN: 128.905	CIRCLING HGT RELATED TO AD ELEV
	TWR: 118.305 118.705	DIST IN NM. ELEV, ALT AND HGT IN FT
	GND: 121.605	SCALE 1:350 000    VAR 4°E (2020)

**OSLO  
GARDERMOEN**

**RNP Z RWY 19R**

TRANSITION ALTITUDE  
7000

ATS AIRSPACE CLASSIFICATION: REF ENR 1.4



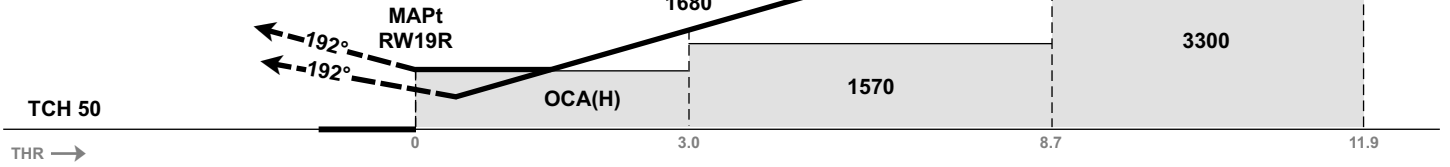
DIST TO RW19R	8	7	6	5	4	3	2	1
ALT (HGT)	3280 (2604)	2940 (2284)	2640 (1964)	2320 (1644)	2000 (1324)	1680 (1004)	1370 (694)	1050 (374)

**MISSED APPROACH:**

CLIMB TO GM995, TURN RIGHT TO GM996 ON COURSE 233°, CLIMBING TO 5000. AT GM996 TURN RIGHT DCT BAVAD FOR NEW APCH.

**NOTE:**

EXPECT VECTORING BY OSLO APP.



CAT OF ACFT		A	B	C	D
<b>OCA (H) STRAIGHT- IN</b>	LPV 3.1%*	837 (161)	849 (173)	858 (182)	868 (192)
	LPV 2.5%*	941 (265)	953 (277)	961 (285)	972 (296)
	LNAV/VNAV	970 (294)	980 (304)	1000 (324)	1030 (354)
	LNAV		1040 (364)	1060 (384)	1080 (404)
<b>CIRCLING</b>		1280 (598)		1920 (1238)	2230 (1548)

**NOTE:** CIRCLING W OF RWY ONLY. \*MINIMUM MISSED APCH CLIMB GRADIENT.

CHANGES: MISSED APCH, EDITORIALS.