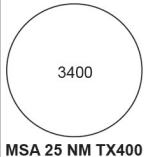
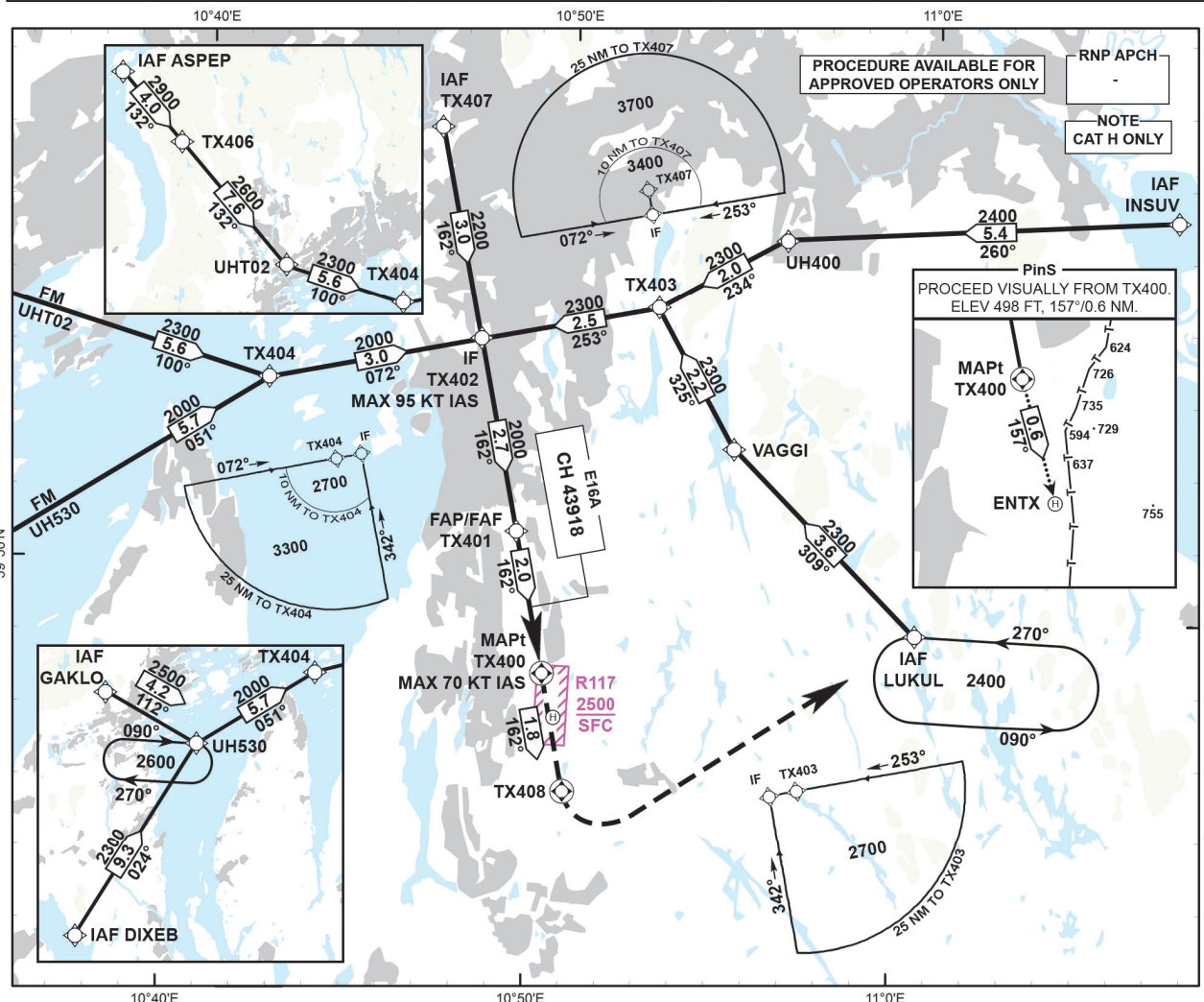
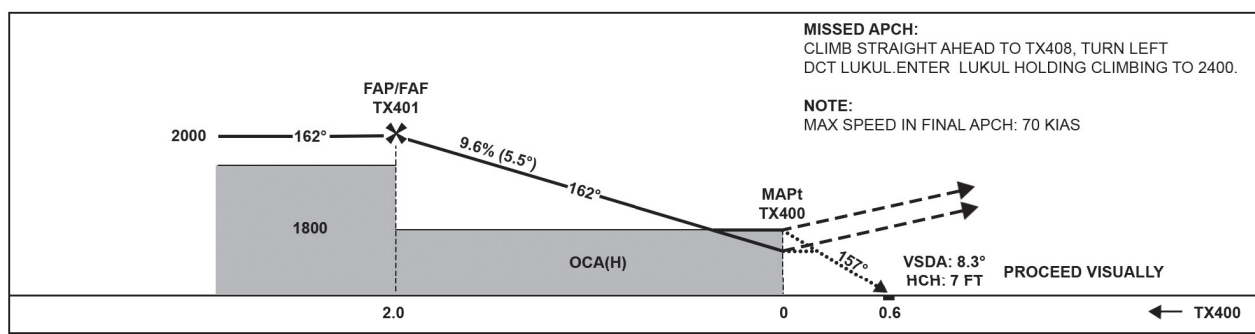


INSTRUMENT APPROACH CHART - ICAO

 <p>MSA 25 NM TX400</p>	OSLO ATIS: 126.130	Alt. and elev. in FT, dist. in NM and bearings MAG		<p>ENTX/ TARALDRUD NORWAY</p> <p>RNP 162</p>
	OSLO APP: 118.480 120.455	HGT related to ENTX HRP elevation of 498 FT		
	GARDERMOEN TWR: 120.105 (123.330)			
	OSLO TRAFFIC: 122.005	1 : 170 000	VAR: 4°E (2020)	



DIST TO TX400	3.5	3.0	2.5	2.0	1.5	1.0	0.5
ALT (HGT)	-	-	-	2000 (1502)	1710 (1212)	1420 (922)	1120 (622)



CAT OF ACFT		H	VISIBILITY	ALS OUT
OCA (H) STRAIGHT-IN	LNAV	1050 (552)	RVR 800 M	PART NCC.OP.100 AWC 7
	LPV	838 (340)		
CIRCLING				
NOTE:				

CHANGES: FREQUENCIES.

RECOMMENDED CODING

ENTX RNP 162													
SN	PD	WI	Fly-over	°M (°T)	MAG VAR	DIST (NM)	REC NAVAID	TD	ALT (FT)	Speed (KT)	VPA(°)/TCH(FT)	ARC CENTRE RADIUS (NM)	RNP (NM)
010	IF	TX407	-	-	-	-	-	-	-	-	-	-	1.0
020	TF	TX402	-	-	-4.0	3.0	-	-	A2200+	K095-	-	-	1.0
010	IF	ASPEP	-	-	-	-	-	-	-	-	-	-	1.0
020	TF	TX406	-	-	-4.0	4.0	-	-	A2900+	-	-	-	1.0
030	TF	UHT02	-	-	-4.0	7.6	-	-	A2600+	-	-	-	1.0
040	TF	TX404	-	-	-4.0	5.6	-	-	A2300+	-	-	-	1.0
050	TF	TX402	-	-	-4.0	3.0	-	-	A2000+	K095-	-	-	1.0
010	IF	DIXEB	-	-	-	-	-	-	-	-	-	-	1.0
020	TF	UH530	-	-	-4.0	9.3	-	-	A2300+	-	-	-	1.0
030	TF	TX404	-	-	-4.0	5.7	-	-	A2000+	-	-	-	1.0
040	TF	TX402	-	-	-4.0	3.0	-	-	A2000+	K095-	-	-	1.0
010	IF	GAKLO	-	-	-	-	-	-	-	-	-	-	1.0
020	TF	UH530	-	-	-4.0	4.2	-	-	A2500+	-	-	-	1.0
030	TF	TX404	-	-	-4.0	5.7	-	-	A2000+	-	-	-	1.0
040	TF	TX402	-	-	-4.0	3.0	-	-	A2000+	K095-	-	-	1.0
010	IF	INSUV	-	-	-	-	-	-	-	-	-	-	1.0
020	TF	UH400	-	-	-4.0	5.4	-	-	A2400+	-	-	-	1.0
030	TF	TX403	-	-	-4.0	2.0	-	-	A2300+	-	-	-	1.0
040	TF	TX402	-	-	-4.0	2.5	-	-	A2300+	K095-	-	-	1.0
010	IF	LUKUL	-	-	-	-	-	-	-	-	-	-	1.0
020	TF	VAGGI	-	-	-4.0	3.6	-	-	A2300+	-	-	-	1.0
030	TF	TX403	-	-	-4.0	2.2	-	-	A2300+	-	-	-	1.0
040	TF	TX402	-	-	-4.0	2.5	-	-	A2300+	K095-	-	-	1.0
010	IF	TX402	-	-	-	-	-	-	-	-	-	-	1.0
020	TF	TX401	-	-	-4.0	2.7	-	-	A2000+	-	-	-	1.0
030	TF	TX400	Y	-	-4.0	2.0	-	-	-	K070-	-5.5/50	-	0.3
040	TF	TX408	Y	-	-4.0	1.8	-	-	-	-	-	-	1.0
050	DF	LUKUL	-	-	-4.0	-	-	L	-	-	-	-	1.0
060	HM	LUKUL	-	270 (274.0)	-4.0	1 MIN	-	L	A2400+	K100-	-	-	1.0
010	HM	UH530	-	090 (094.0)	-4.0	1 MIN	-	R	A2600+	K100-	-	-	1.0

Note: Recommended coding is based on ARINC 424 and is provided solely to indicate which procedure design protection areas were used in the Instrument Flight Procedure Design process.

Note: UH530 holding not included in standard APCH transitions.

FAS DATA BLOCK

Operation type	0	LTP/FTP ellipsoidal height	200.2
SBAS Provider	1	FPAP latitude	594658.9540N
Airport Identifier	ENTX	FPAP longitude	0105055.0480E
Runway	16	Threshold crossing height	50
Approach performance designator	0	TCH units	FT
Route Indicator	-	Glide path angle	5.5
Reference path data selector	0	Course width at threshold	105
Reference path Identifier	E16A	Length offset	0
LTP/FTP latitude	594823.6225N	Horizontal alert limit (HAL)	40
LTP/FTP longitude	0105014.6230E	Vertical alert limit (VAL)	35
		PRECISION APPROACH PATH CRC REMAINDER	E803BE8F