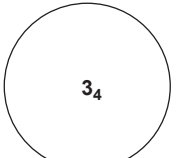
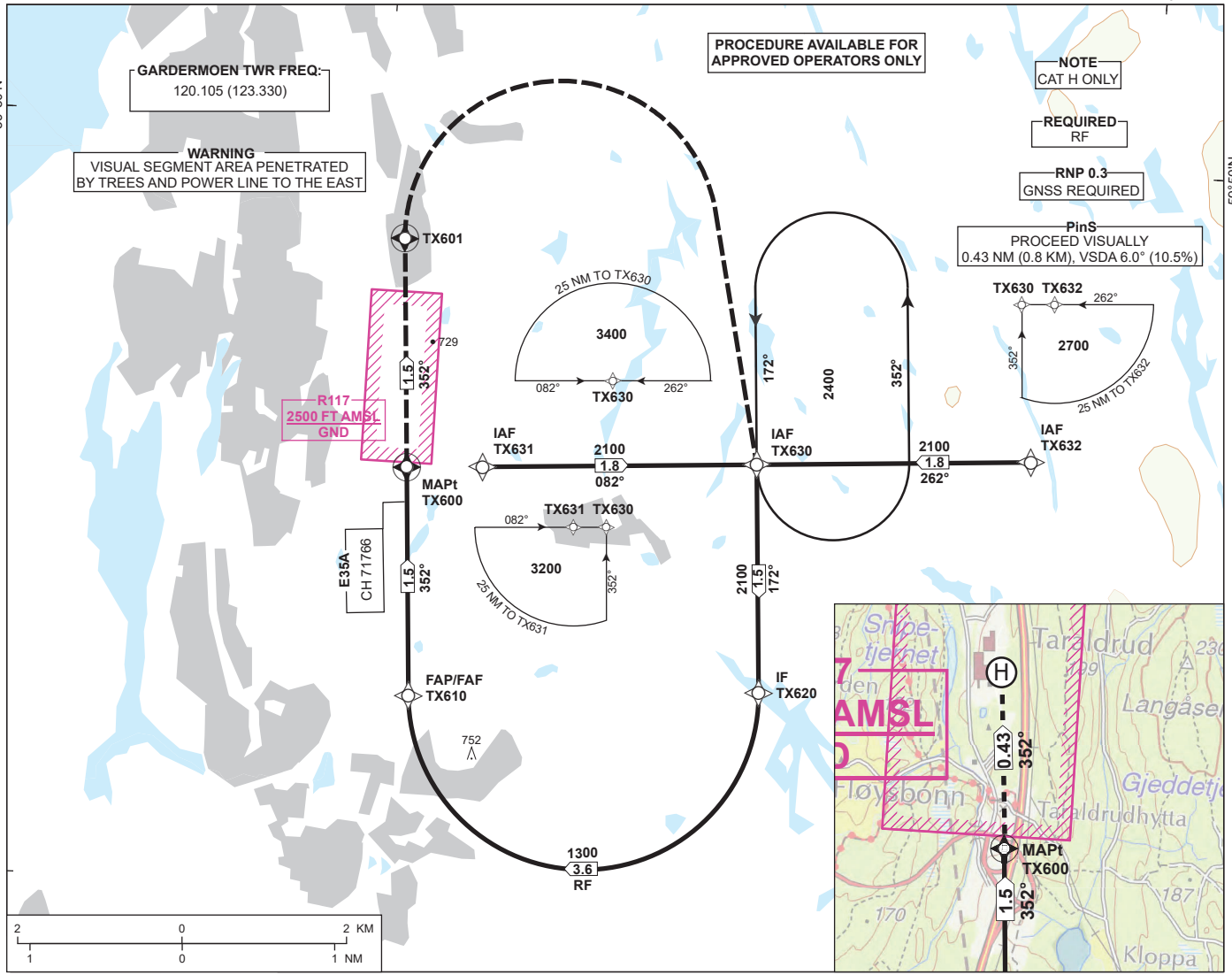


# INSTRUMENT APPROACH CHART - ICAO

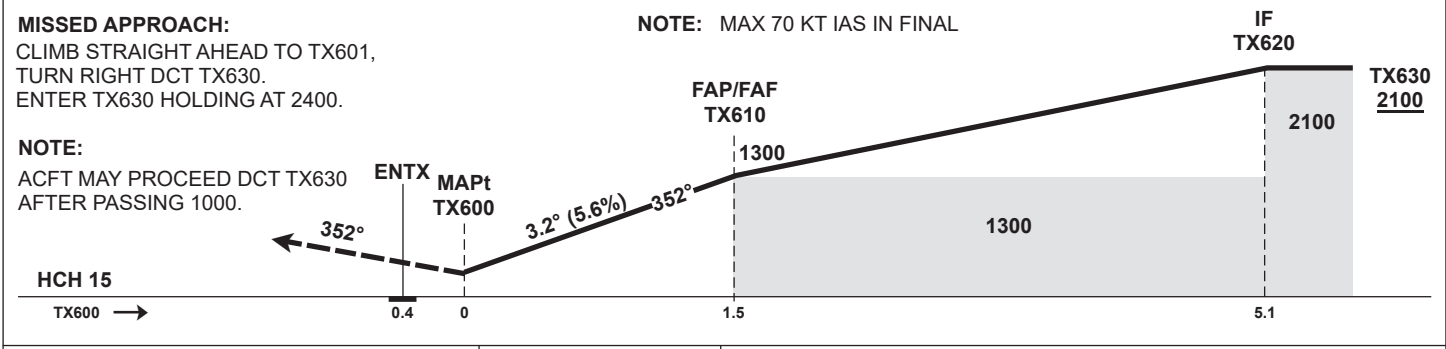
**ENTX /  
TARALDRUD  
RNP 352 (LPV only)**

 <b>MSA 25 NM TX600</b>	<b>OSLO ATIS:</b> 126.130	<b>HRP ELEV:</b> 498	
	<b>OSLO APP:</b> 118.480	120.455	<b>HGT RELATED TO HRP</b>
	<b>OSLO TRAFFIC:</b> 122.005		
	<b>DIST IN NM. ELEV, ALT AND HGT IN FT</b>		
	<b>SCALE</b> 1:80 000	<b>VAR</b> 4° E (2020)	

**TRANSITION ALTITUDE  
7000**



<b>DIST TO TX600</b>	1.5	1.0	0.5
<b>ALT (HGT)</b>	1300 (802)	1130 (632)	960 (462)



<b>CAT OF ACFT</b>		<b>H</b>
<b>OCA (H) STRAIGHT-IN</b>	<b>LPV 10%*</b>	788 (290)
	-	-
	-	-
<b>CIRCLING</b>		-

**VIS 800 m**

**NOTE:** \*MISSED APCH CLIMB GRADIENT (10%) APPLICABLE TO 1000, then 4.2%

CHANGES: FREQUENCIES.

ATS AIRSPACE CLASSIFICATION: REF ENR 1.4

**ENTX RNP 352 (LPV only) - RECOMMENDED CODING**

SN	PD	WI	Fly-over	°M (°T)	MAG VAR	DIST (NM)	REC NAVAID	TD	ALT (FT)	Speed (KT)	VPA (°)/ TCH (FT)	ARC CENTRE RADIUS (NM)	RNP (NM)
010	IF	TX631	-	-	-4.0	-	-	-	-	-	-	-	-
020	TF	TX630	-	-	-4.0	1.8	-	-	A2100+	-	-	-	0.3
010	IF	TX632	-	-	-4.0	-	-	-	-	-	-	-	-
020	TF	TX630	-	-	-4.0	1.8	-	-	A2100+	-	-	-	0.3
030	TF	TX620	-	-	-4.0	1.5	-	-	A2100+	-	-	-	0.3
040	RF	TX610	-	-	-4.0	3.6	-	R	A1300+	-	-	TX615 1.15	0.3
050	TF	TX600	Y	-	-4.0	1.5	-	-	-	K070-	-3.2/-	-	0.3
060	CF	TX601	Y	-	-4.0	1.5	-	-	-	-	-	-	0.3
070	DF	TX630	-	-	-4.0	-	-	R	A2400	-	-	-	0.3
080	HM	TX630	-	172 (176.0)	-4.0	1 MIN	-	L	A2400+	-	-	-	1.0

Note: Recommended coding is based on ARINC 424 and is provided solely to indicate which procedure design protection areas were used in the Instrument Flight Procedure Design process.

**FAS DB**

Operation type	0	LTP/FTP ellipsoidal height	228.9
SBAS provider	1	FPAP latitude	594935.2430N
Airport identifier	ENTX	FPAP longitude	0105015.1620E
Runway	35	Threshold crossing height	50
Approach performance designator	0	TCH units	FT
Route indicator	-	Glide path angle	3.2
Reference path data selector	0	Course width at threshold	105
Reference path identifier	E35A	Length offset	0
LTP/FTP latitude	594808.3710N	Horizontal alert limit (HAL)	40
LTP/FTP longitude	0105027.2270E	Vertical alert limit (VAL)	35
		PRECISION APPROACH PATH CRC REMAINDER	CD6DE58D