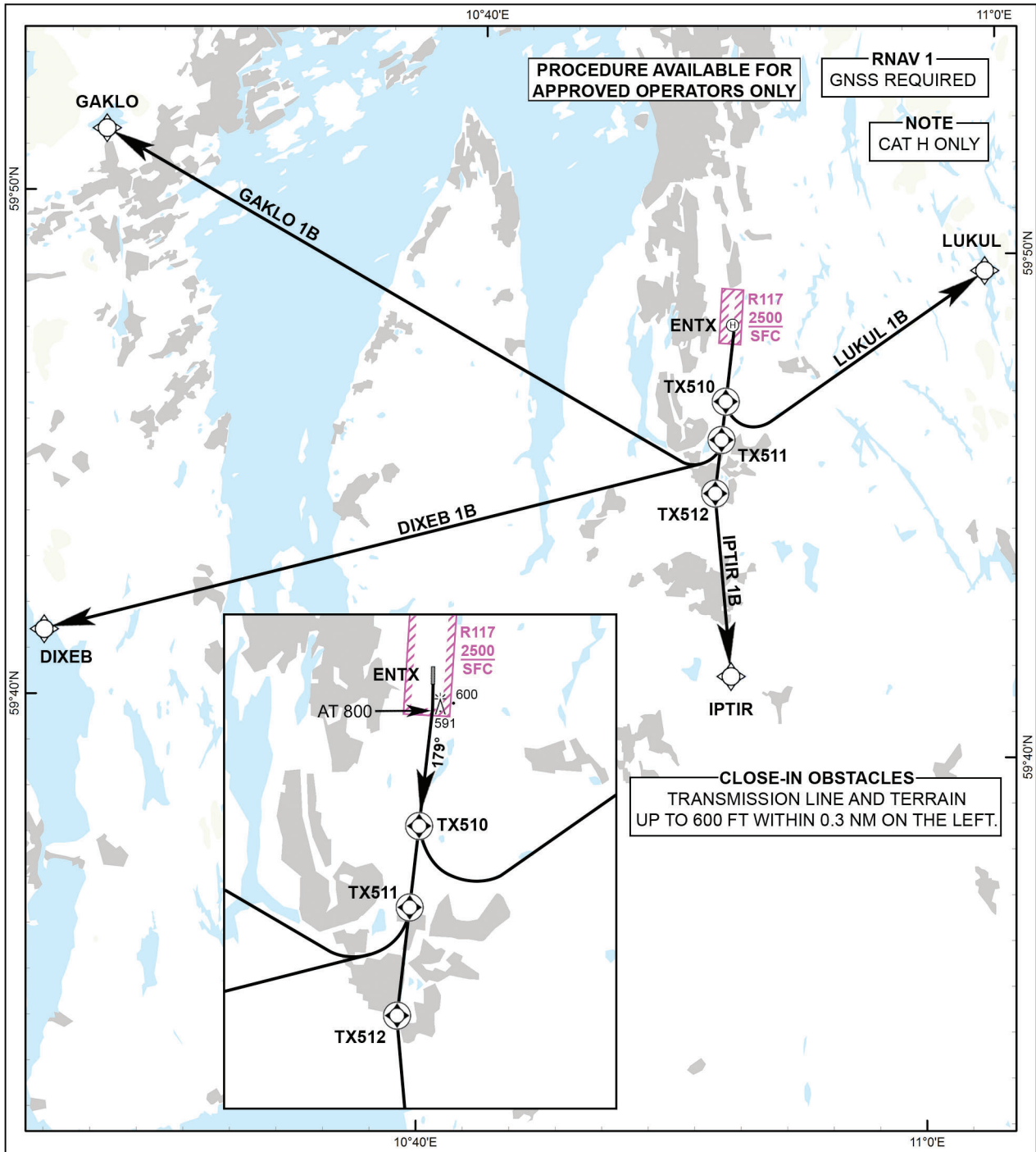


STANDARD DEPARTURE CHART INSTRUMENT

<div style="border: 1px solid black; border-radius: 50%; width: 40px; height: 40px; display: flex; align-items: center; justify-content: center; margin: 0 auto;">34</div> <p>MSA 25 NM HRP</p>	OSLO ATIS: 126.130 OSLO APP: 118.480 120.455 GARDERMOEN TWR: 120.105 (123.330) OSLO TRAFFIC: 122.005	ALT AND ELEV ARE IN FT DIST IN NM		TARALDRUD (ENTX) FATO 17 NORWAY
	VAR: 4°E (2020)	TA: 7000	DIXEB 1B, GAKLO 1B, LUKUL 1B, IPTIR 1B	



TAKE-OFF MINIMA: RVR 400 M
LOW VISIBILITY TAKE-OFF: NOT APPROVED

CHANGES: FREQUENCIES.

**STANDARD DEPARTURE ROUTES -
INSTRUMENT**
ENTX/Taraldrud
FATO 17

DESIGNATOR	ROUTE	RESTRICTIONS	CLIMB TO	CONTACT
DIXEB 1B (DIXEB ONE BRAVO DEPARTURE)	Climb on course 172° to 800 FT, turn right to intercept course 179° to TX511. At TX511 turn right DCT DIXEB.	Standard climb gradient 5% (304 FT/NM)	2300 FT	-
GAKLO 1B (GAKLO ONE BRAVO DEPARTURE)	Climb on course 172° to 800 FT, turn right to intercept course 179° to TX511. At TX511 turn right DCT GAKLO.	Standard climb gradient 5% (304 FT/NM)	2200 FT	-
IPTIR 1B (IPTIR ONE BRAVO DEPARTURE)	Climb on course 172° to 800 FT, turn right to intercept course 179° to TX512. At TX512 turn left DCT IPTIR.	Standard climb gradient 5% (304 FT/NM)	1800 FT	-
LUKUL 1B (LUKUL ONE BRAVO DEPARTURE)	Climb on course 172° to 800 FT, turn right to intercept course 179° to TX510. At TX510 turn left DCT LUKUL.	MNM climb gradient 8.6% (523 FT/NM) to 900 FT.	2200 FT	-