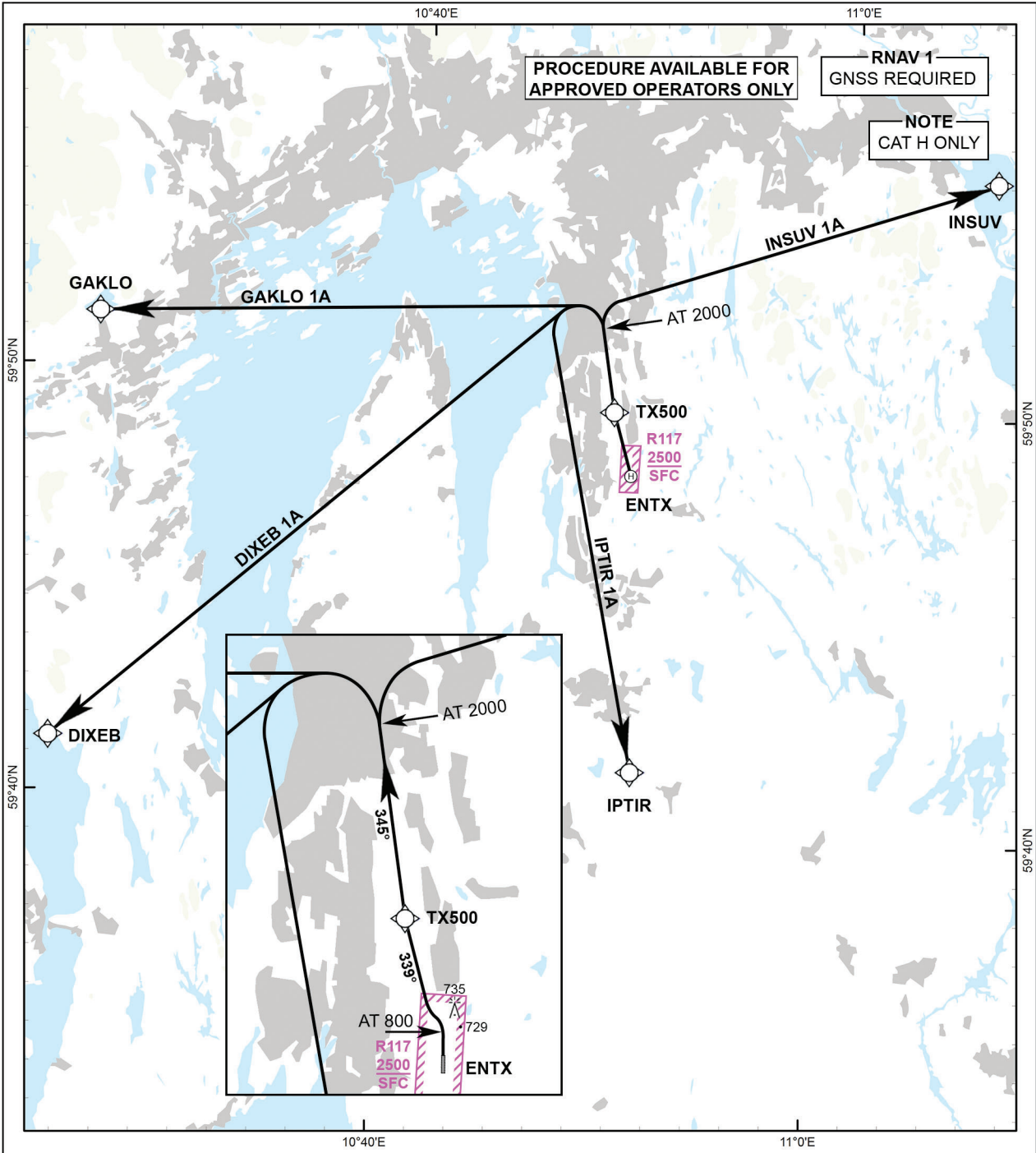


STANDARD DEPARTURE CHART INSTRUMENT

<div style="border: 1px solid black; border-radius: 50%; width: 40px; height: 40px; display: flex; align-items: center; justify-content: center; margin: 0 auto;">34</div> <p>MSA 25 NM HRP</p>	OSLO ATIS: 126.130 OSLO APP: 118.480 120.455 GARDERMOEN TWR: 120.105 (123.330) OSLO TRAFFIC: 122.005	ALT AND ELEV ARE IN FT DIST IN NM		TARALDRUD (ENTX) FATO 35 NORWAY
			VAR: 4°E (2020)	TA: 7000

DIXEB 1A, GAKLO 1A, INSUV 1A, IPTIR 1A



TAKE-OFF MINIMA: RVR 400 M

LOW VISIBILITY TAKE-OFF: NOT APPROVED

CHANGES: FREQUENCIES

**STANDARD DEPARTURE ROUTES -
INSTRUMENT**

ENTX/Taraldrud

FATO 35

DESIGNATOR	ROUTE	RESTRICTIONS	CLIMB TO	CONTACT
DIXEB 1A (DIXEB ONE ALFA DEPARTURE)	Climb on course 352° to 800 FT, turn left to intercept course 339° to TX500. Climb from TX500 on course 345°, when passing 2000 FT turn left DCT DIXEB.	MNM climb gradient 10.2% (620 FT/NM) to 800 FT.	2300 FT	-
GAKLO 1A (GAKLO ONE ALFA DEPARTURE)	Climb on course 352° to 800 FT, turn left to intercept course 339° to TX500. Climb from TX500 on course 345°, when passing 2000 FT turn left DCT GAKLO.	MNM climb gradient 10.2% (620 FT/NM) to 800 FT.	2200 FT	-
INSUV 1A (INSUV ONE ALFA DEPARTURE)	Climb on course 352° to 800 FT, turn left to intercept course 339° to TX500. Climb from TX500 on course 345°, when passing 2000 FT turn right DCT INSUV.	MNM climb gradient 10.2% (620 FT/NM) to 800 FT.	2400 FT	-
IPTIR 1A (IPTIR ONE ALFA DEPARTURE)	Climb on course 352° to 800 FT, turn left to intercept course 339° to TX500. Climb from TX500 on course 345°, when passing 2000 FT turn left DCT IPTIR.	MNM climb gradient 10.2% (620 FT/NM) to 800 FT.	2000 FT	-