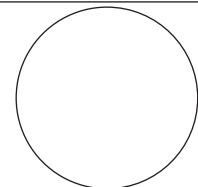


# TRANSITION CHART INSTRUMENT - RNAV



MSA NOT AVBL

OSLO ATIS:	126.130
OSLO APP:	118.480
OSLO TRAFFIC:	120.455

1:900 000

ALT AND ELEV ARE IN FT  
DIST IN NM

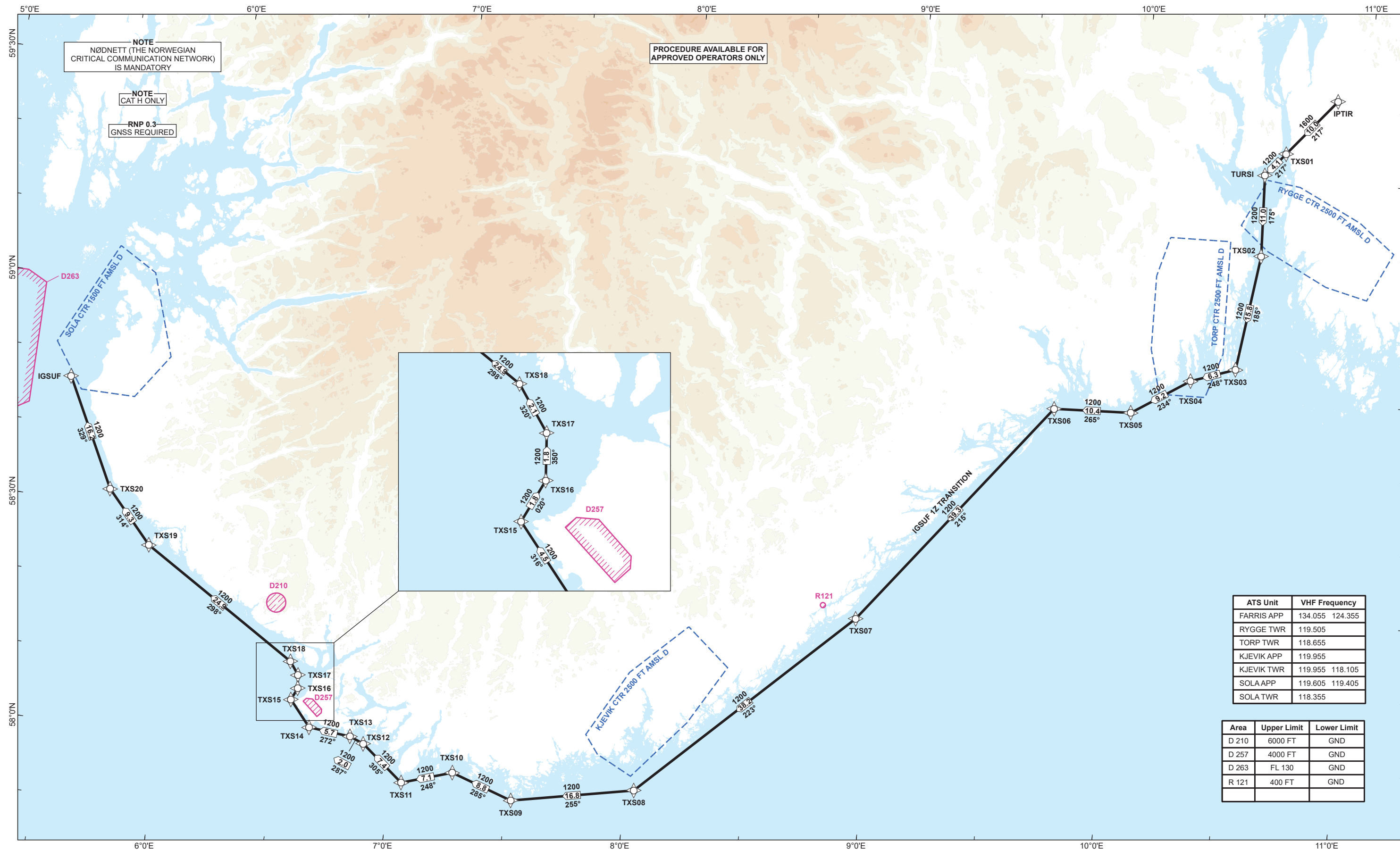
VAR 4° E (2020)

TA 7000

## ENTX / TARALDRUD SOUTHERN TRANSITION ROUTES FROM SID 17/35

NORWAY

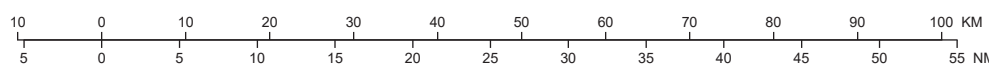
IGSUF 1Z TRANSITION



ATS Unit	VHF Frequency
FARRIS APP	134.055 124.355
RYGGE TWR	119.505
TORP TWR	118.655
KJEVIK APP	119.955
KJEVIK TWR	119.955 118.105
SOLA APP	119.605 119.405
SOLA TWR	118.355

Area	Upper Limit	Lower Limit
D 210	6000 FT	GND
D 257	4000 FT	GND
D 263	FL 130	GND
R 121	400 FT	GND

ROUTE AND WAYPOINT DESCRIPTIONS  
ON THE SUCCEEDING PAGES



ATS AIRSPACE CLASSIFICATIONS: REF ENR 1.4  
LEGEND: REF GEN 2.3

## ENTX SOUTHERN TRANSITION ROUTES FROM SID 17/35

**REMARKS:** CAT H

**RADIO COMMUNICATION FAILURE:** -

**NOTES:** Approved operators only.  
Nødnett (The Norwegian Critical Communication Network) is mandatory.

### TRANSITION ROUTES

DESIGNATOR	ROUTE
IGSUF 1Z TRANSITION	From IPTIR to TXS01 to TURSI to TXS02 to TXS03 to TXS04 to TXS05 to TXS06 to TXS07 to TXS08 to TXS09 to TXS10 to TXS11 to TXS12 to TXS13 to TXS14 to TXS15 to TXS16 to TXS17 to TXS18 to TXS19 to TXS20 to IGSUF

**ENTX SOUTHERN TRANSITION ROUTES FROM SID 17/35 - SIGNIFICANT POINTS**

<b>Name</b>	<b>Latitude</b>	<b>Longitude</b>
IGSUF	584633.70N	0052453.70E
IPTIR	594116.79N	0105113.09E
TURSI	593039.00N	0103254.00E
TXS01	593344.54N	0103812.09E
TXS02	591937.95N	0103320.07E
TXS03	590401.68N	0102834.16E
TXS04	590204.23N	0101657.69E
TXS05	585711.87N	0100151.40E
TXS06	585656.10N	0094142.26E
TXS07	582614.90N	0085445.88E
TXS08	580007.91N	0080213.22E
TXS09	575659.88N	0073114.61E
TXS10	575951.05N	0071538.10E
TXS11	575742.42N	0070256.13E
TXS12	580220.44N	0065208.47E
TXS13	580305.18N	0064833.73E
TXS14	580338.64N	0063753.49E
TXS15	580704.44N	0063223.76E
TXS16	580843.01N	0063346.34E
TXS17	581030.08N	0063324.72E
TXS18	581212.47N	0063103.30E
TXS19	582519.82N	0055058.60E
TXS20	583209.52N	0053902.65E

CHANGES: NEW PAGE.